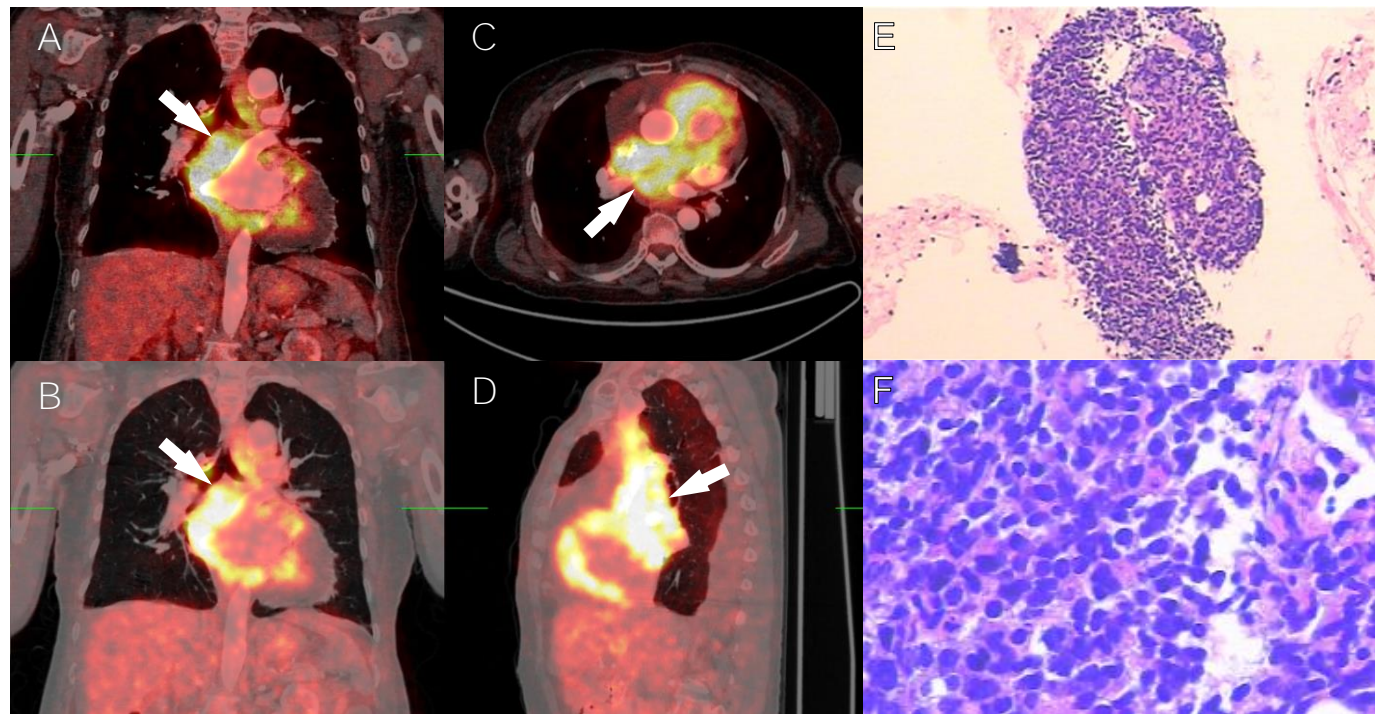


**Figure S6. PET/CT-guided transbronchial biopsy.**



**Figure S6:** PET/CT imaging of a patient diagnosed with primary cardiac diffuse large B-cell lymphoma (DLBCL). The biopsy was made via endobronchial ultrasonography-guided fine-needle aspiration biopsy (EBUS-FNAB) at the site indicated by the arrow (A-D). A&C: PET images fused with contrast-enhanced CT images in the soft-tissue window in the coronal & transaxial plane, respectively; B&D: PET images fused with contrast-enhanced CT images in lung window in the coronal & sagittal plane, respectively. E&F: low & high-power field of the acquired tissue with hematoxylin-eosin staining, respectively. The subsequent immunohistochemistry confirmed the diagnosis of DLBCL. Abbreviations : PET/CT=positron emission tomography–computed tomography.